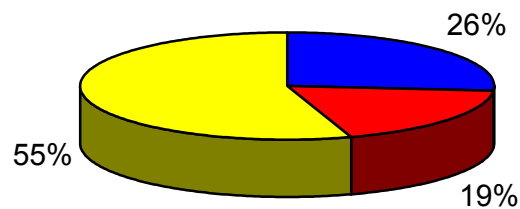


**THE UNIVERSITY OF VIRGINIA'S COLLEGE AT WISE
TUITION AND FEES
2002-2005**

	2002-03		2003-04		2004-05	
	In-State	Out-of-State	In-State	Out-of-State	In-State	Out-of-State ¹
Tuition Annual	\$2,255	\$10,015	\$2,630	\$11,518	\$2,788	\$12,158
Required Fees	\$1,785	\$1,785	\$1,900	\$1,900	\$1,994	\$2,044
Room & Board	\$5,401	\$5,401	\$5,586	\$5,586	\$5,826	\$5,826

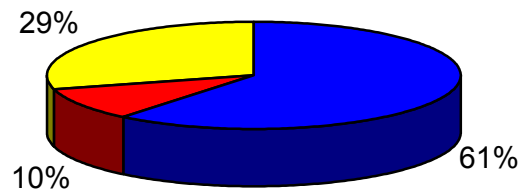
¹ Includes State Capital Fee of \$50

2004-05 In-State Expense Breakdown



■ Annual Tuition ■ Required Fees ■ Room & Board

2004-05 Out-of-State Expense Breakdown



■ Annual Tuition ■ Required Fees ■ Room & Board