

$\frac{t^2 g x - 2}{2 \sqrt{11} \times 3}$ Q'' $\int (x \pm a^2)$ $e = 2,79$

$$\sum_{n=0}^{+\infty} \frac{x^n}{n!}$$

$$\phi = \sqrt{\frac{\sum (x - m)^2}{n - 1}}$$

$$S = \int_{t=2}^{10} f(x) dx$$

$e = \infty$
 \ln
 $-\frac{3a}{x}$

UVA WISE TUTOR CONNECTION

SMAR THINKING ONLINE TUTORING



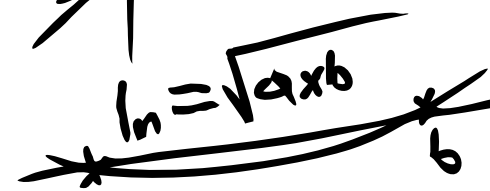
SCAN ME



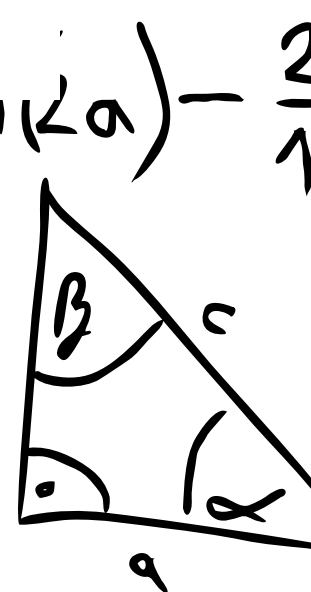
$y = 2x^2$



$11 \approx 3,1415$



$S_3 = \begin{bmatrix} 1 & 0 & 0 \\ 1 & 0 & 1 \\ 0 & 0 & 1 \end{bmatrix}$



$\sin a = b$

HOW TO SIGN UP FOR SMARTHINKING

LOGIN USING THE
INFORMATION BELOW

username: uvawise09tutor

password: getaccess

Then create a personal account, and begin scheduling appointments by clicking "tutoring" on the dashboard page!

You can work with a tutor IMMEDIATELY or you can schedule a future session by selecting your preferred option on the left hand side of the dashboard page.